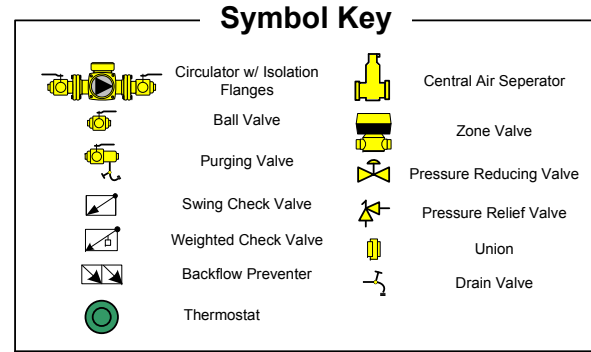
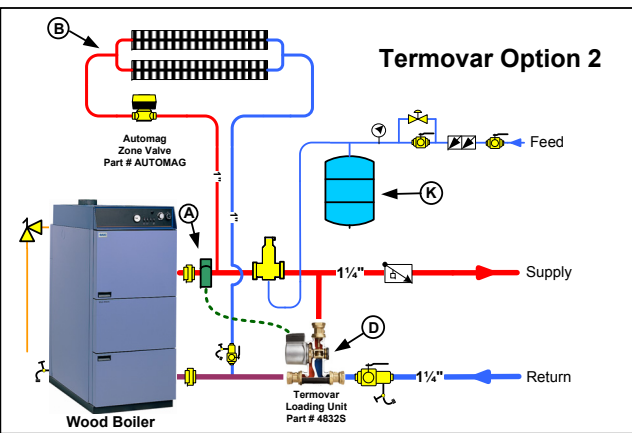
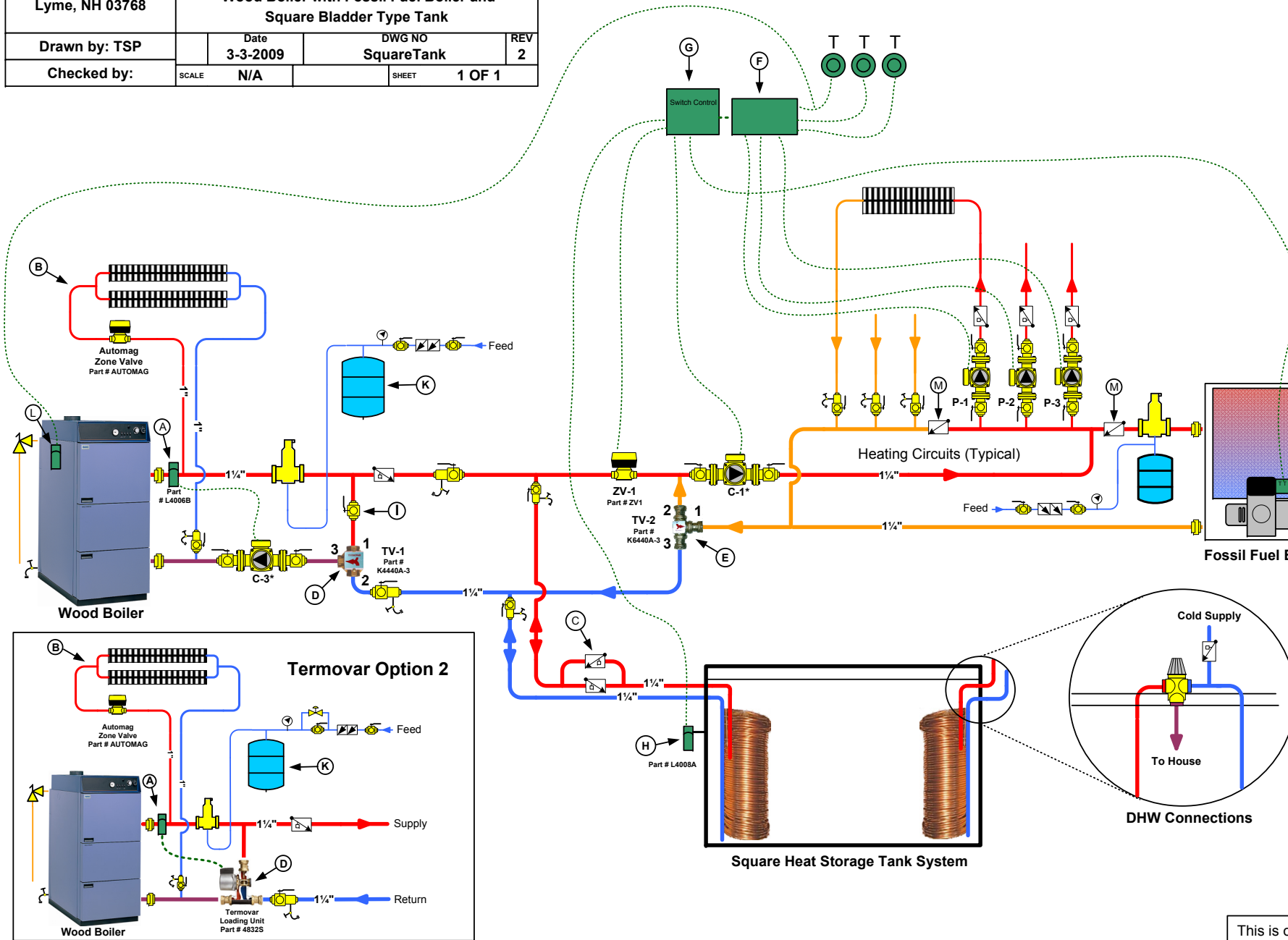


| | | | |
|---|---|----------------------|----------|
| BioHeat USA 4 Britton Lane Lyme, NH 03768 | BioHeat USA Piping Layout Concept Diagram | | |
| | Wood Boiler with Fossil Fuel Boiler and Square Bladder Type Tank | | |
| Drawn by: TSP | Date 3-3-2009 | DWG NO SquareTank | REV 2 |
| Checked by: | SCALE N/A | SHEET 1 OF 1 | |



NOTES:

- (A) Aquastat-Honeywell L4006B BioHeat part #L4006B- **Used Only for the Solo Plus Boiler with the Analog Controller.**
- (B) Emergency Gravity Flow Overheat Loop-Needs to be 10% of Wood Boiler Output. The Automag Zone Valve must be Mounted Horizontally.
- (C) Weighted Check Valves Used as Heat Traps
- (D) Termovar Mixing Valve (2 Options Available)
- (E) Termovar Diverter Valve-Termovar Kit-Part #K6440AF
- (F) Circulator Switch Relay-Typical Controller
- (G) BioHeat USA Switch Control-Part # BLTCONTROL
- (H) Backup Boiler Control-Honeywell Aquastat L4008A or Equivalent
- (I) Balancing Valve Required. (Start with Valve Closed halfway, i.e., at 45 degrees)
- (J) Anti-Scald Valve needs to be installed below tank's water line or swing check installed on cold water line to prevent hot water from entering cold water
- (K) Amtrol 60 or Equivalent Expansion Tank is Suitable for most Solo Plus Installations up to 86 gallons
- (L) Honeywell L4008B Overheat Aquastat Set to 200°F.
- (M) Connected to the Largest Heating Circuit.-**Used with the Solo Plus W/Analog Controller, Froling FHG, and Solo Innova.**
- (N) Check Valve Should be a Swing Check and not a Weighted Check Valve to Prevent Ghost Flow to Heating Circuits.



This is only a **concept** drawing. Final design, installation and code compliance details are the responsibility of the designer/installer of the system.