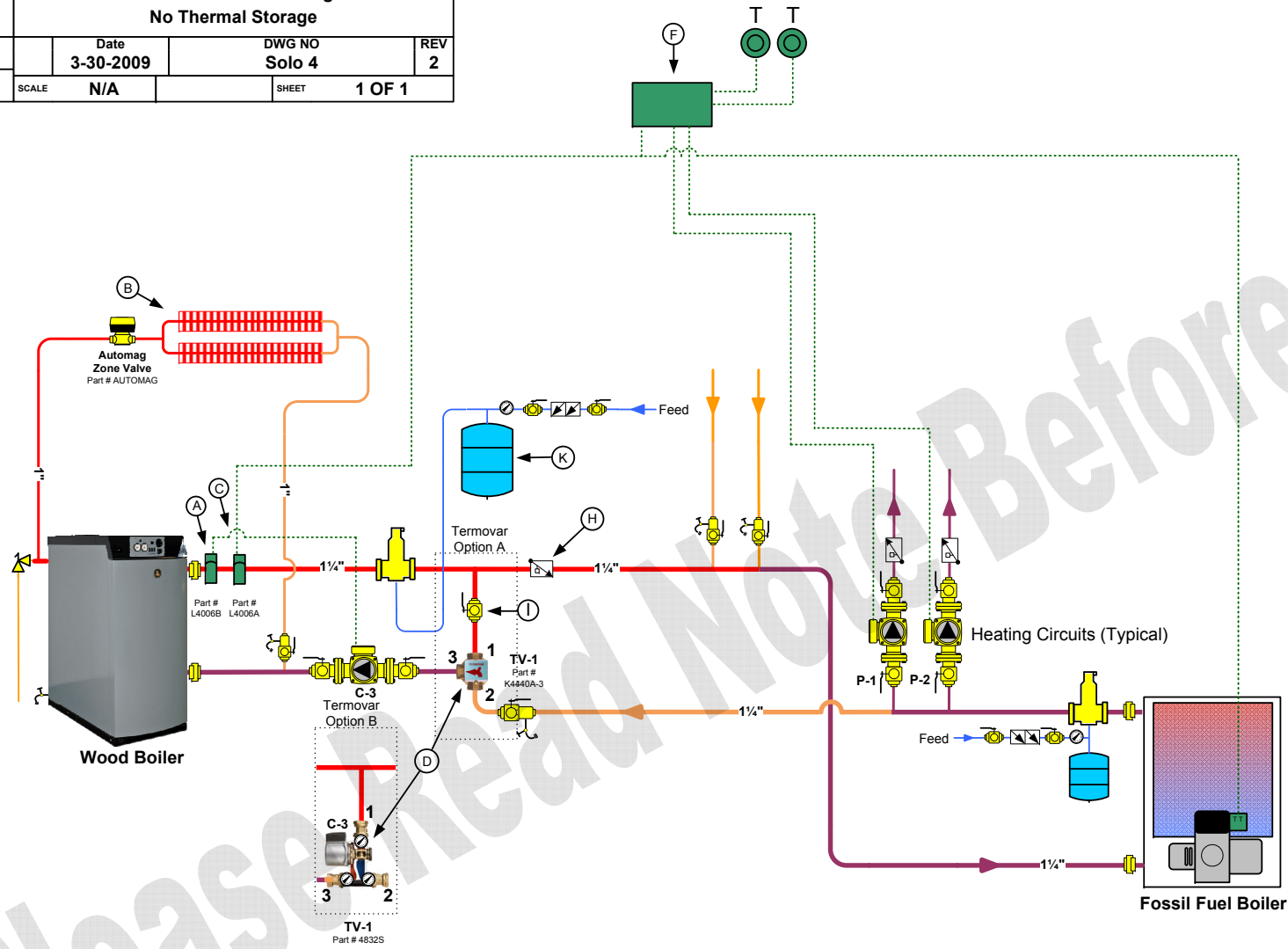
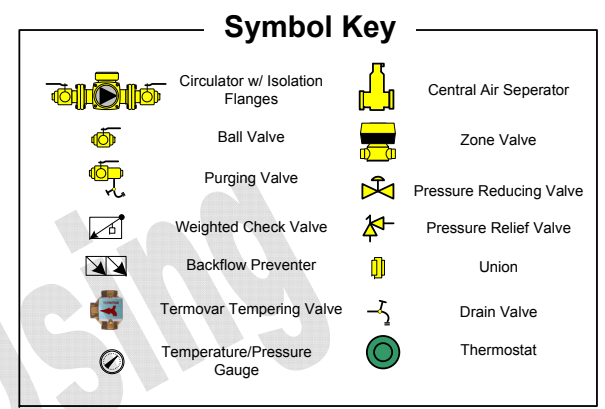
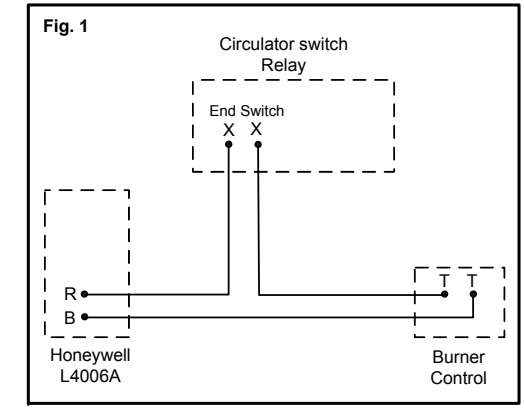


BioHeat USA 4 Britton Lane Lyme, NH 03768	BioHeat USA Piping Layout Concept Diagram		
	Two Boiler Parallel Design No Thermal Storage		
Drawn by: TSP	Date 3-30-2009	DWG NO Solo 4	REV 2
Checked by:	SCALE N/A	SHEET 1 OF 1	



NOTES:

- (A) Aquastat-Honeywell L4006B or Equivalent Part # L4006B
- (B) Emergency Gravity Flow Overheat Loop Needs to be 10% of Wood Boiler Output. Automag needs to be installed in the horizontal position.
- (C) An aquastat can be used to switch on fossil fuel boiler. Honeywell aquastat L4006A or equivalent (see Fig. 1) (Part #L4006A)
- (D) Termovar Mixing Valve (2 Options Available)
- (F) Circulator Switch Relay-Typical Controller
- (H) Weighted check valve is needed to prevent ghost flow during fossil fuel operation.
- (I) Balancing Valve Required. (Start with Valve Closed halfway, i.e., at 45 degrees)
- (K) Amtrol 60 or Equivalent Expansion Tank is Suitable for most Solo Plus Installations up to 86 gallons



Note: Diagram is best suited for homes with less than three heating circuits and/or the Fossil Fuel boiler needs to be kept hot. The returns from the heating circuits are mixing with the hot supply from the wood boiler. This could cause colder water temperatures at the heating circuits and the fossil fuel boiler.

This is only a **concept** drawing. Final design, installation and code compliance details are the responsibility of the designer/installer of the system.