

120 VOLTS AC, SINGLE PHASE, 60 HERTZ HOT FROM 15 AMP CIRCUIT BREAKER OR FUSE. MAIN DISCONNECT AND OVERCURRENT PROTECTION PROVIDED BY OTHERS.

EMERGENCY CUT-OFF SWITCH

FIRE-O-MATIC CUT OUT

POWER SWITCH (SHOWN OFF/RESET)

L8151A AQUASTAT (on optional heat storage tank)

NOTE 1: SEE FIELD WIRING DIAGRAM FOR CONNECTION OF T T TERMINALS IN L8124C AQUASTAT. THESE TERMINALS MAY OR MAY NOT BE USED.

NOTE 2: IF NO HEAT STORAGE TANK IS USED, PLACE JUMPER BETWEEN LOW VOLTAGE TERMINALS 1 & 3 AND CONNECT NOTHING TO LOW VOLTAGE TERMINAL 2.

NOTE 3: MAXIMUM AUXILIARY 24 VAC POWER AVAILABLE AT LOW VOLTAGE TERMINALS 3 & 4 IS 38 VA.

NOTE 4: LOW VOLTAGE TERMINALS 5 AND 6 WILL BE CONNECTED TO THE HEAT DUMP ZONE THERMOSTAT. RELAY CR-1 CONTACT 4-6 WILL OVERRIDE THIS THERMOSTAT. THE POWER SOURCE IS THE THERMOSTAT CIRCUIT.

NOTE 5: LOW VOLTAGE TERMINALS 7 AND 8 WILL BE CONNECTED TO THE LOW VOLTAGE T T TERMINALS ON THE BACKUP BURNER. THE POWER SOURCE IS THIS BURNER WHICH IS CONNECTED TO TERMINALS "B" AND "N" IN THIS PANEL.

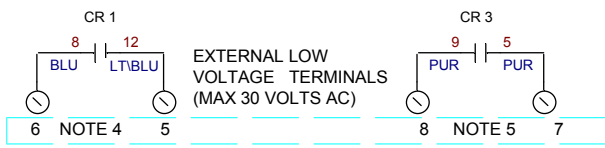
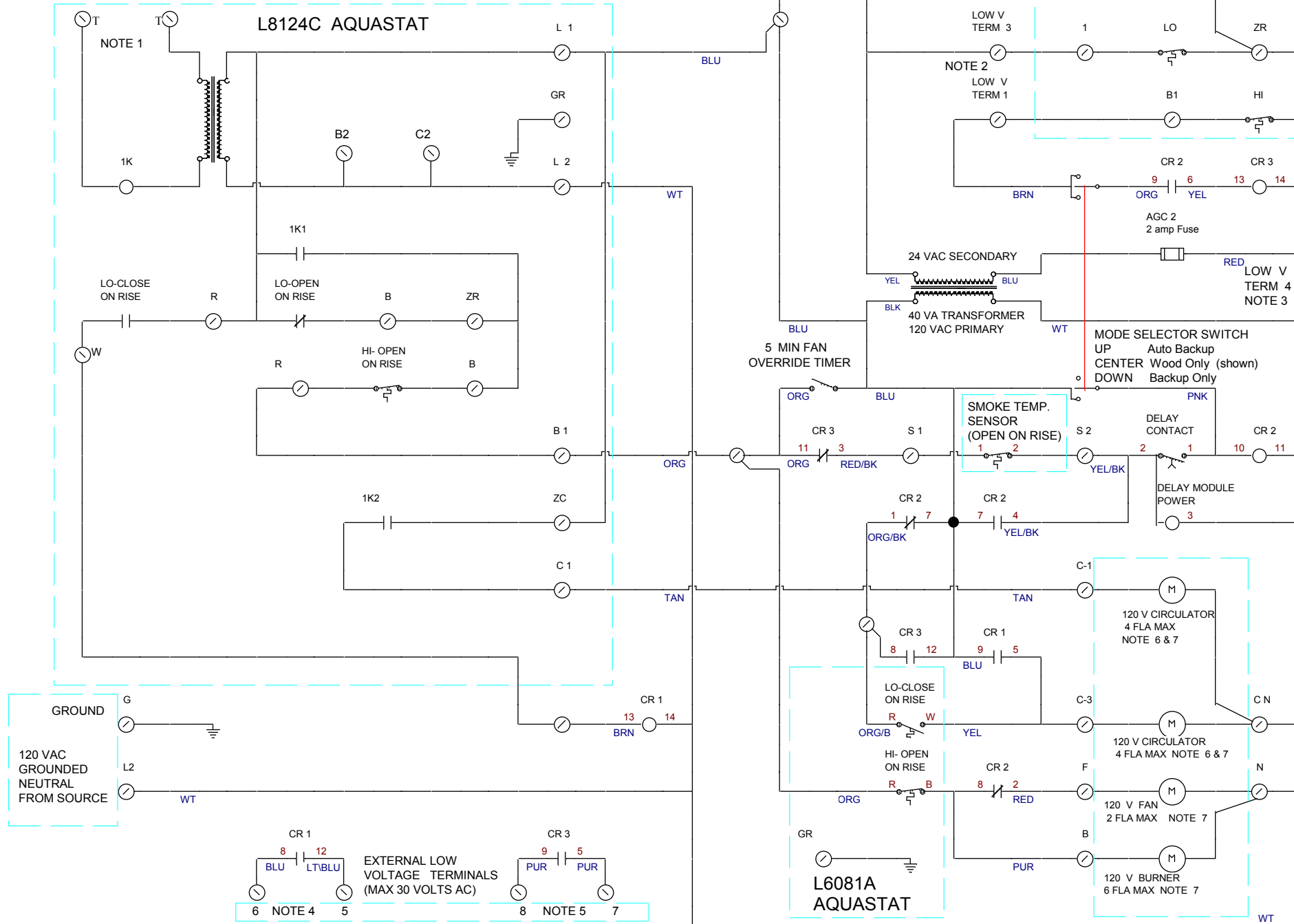
NOTE 6: REFER TO FIELD WIRING DIAGRAM FOR CONNECTION OF CIRCULATOR MOTOR(S) TO TERMINALS C-1 AND/OR C-3.

NOTE 7: THERMAL OVERLOAD PROTECTION FOR MOTORS BY OTHERS. TOTAL COMBINED MOTORS FLA SHALL BE 11 AMPS MAXIMUM.

NOTE 8: ELECTRICIAN MUST REFER TO APPROPRIATE FIELD WIRING DIAGRAM SPECIFIC TO THE PLUMBING PLAN! THIS DIAGRAM IS SENT WITH THE BOILER OR MAY BE REQUESTED FROM TARM USA, INC.

NOTE 9: WIRING EXTERNAL TO THE PANEL SHOWN IN "DASH" BOXES. THE L8124C AND THE L6081A AQUASTATS ARE PRE-WIRED TO THE PANEL. ALL OTHER ITEMS IN DASH BOXES ARE BY OTHERS.

NOTE 10: IN PANEL, LINE VOLTAGE WIRES ARE 14 GAUGE AND LOW VOLTAGE WIRES ARE 18 GAUGE.



DRAWN FOR:	TARM USA Inc. Lyme, NH 03768 Ph. (603) 795-2214		
TITLE:	WIRING SCHEMATIC for CONTROLS for EXCEL BOILER		
MFG BY:	CUSTOM CONTROLS Scipio Center, NY 13147	DRAWN BY:	J.L.H.
DATE:	6-7-05	DRAWING#:	3
	FILE NAME:	TMUL0605	