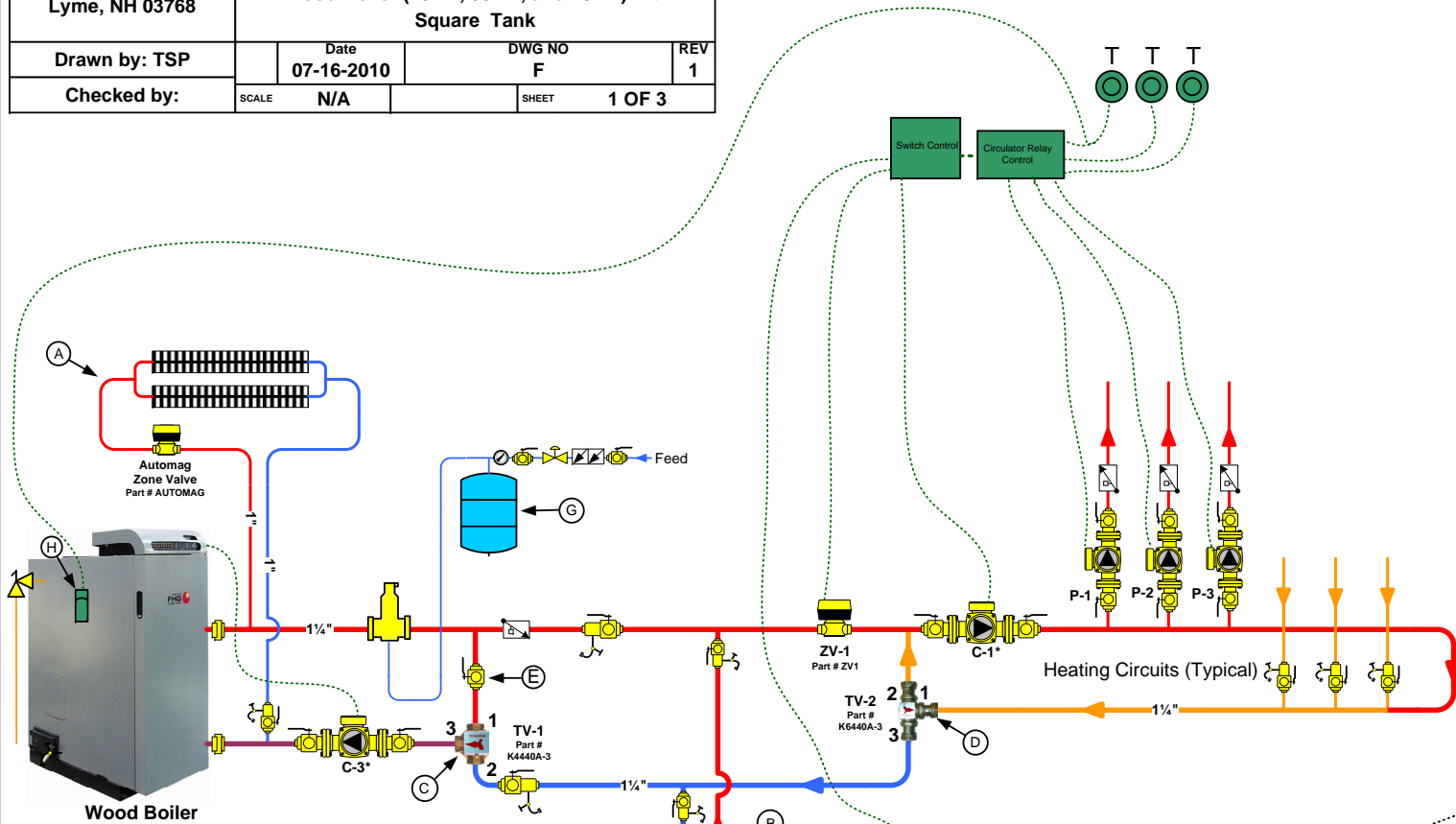
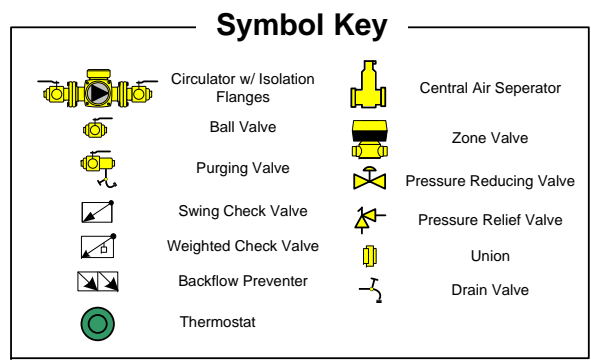
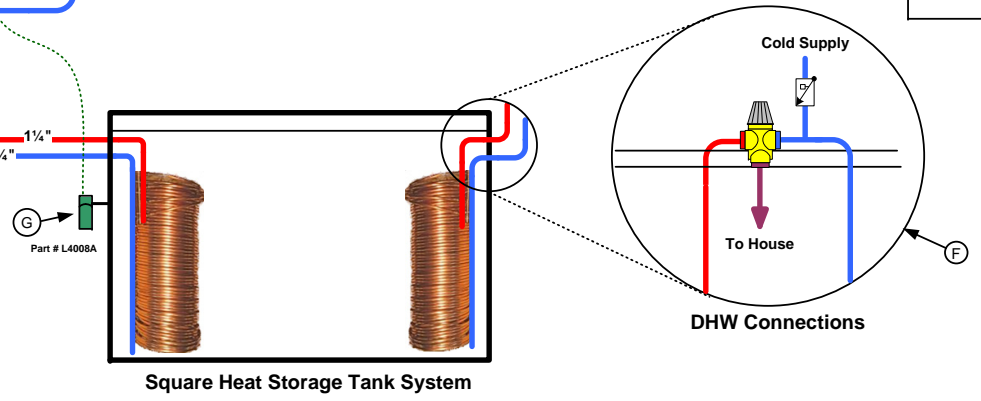
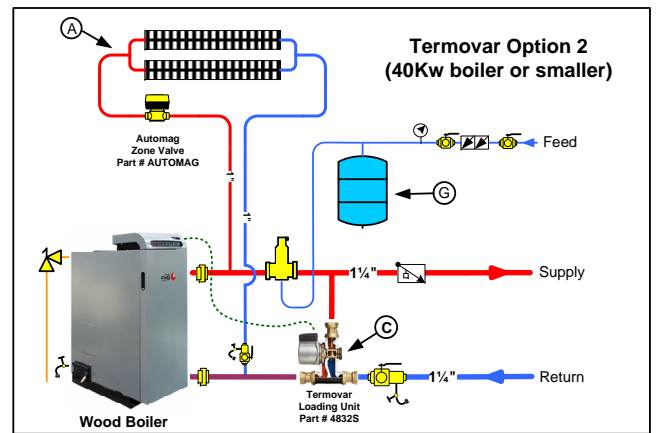


Tarm Biomass 4 Britton Lane Lyme, NH 03768	Tarm Biomass Piping Layout Concept Diagram		
	Wood Boiler (20Kw, 30Kw, and 40Kw) with Square Tank		
Drawn by: TSP	Date 07-16-2010	DWG NO F	REV 1
Checked by:	SCALE N/A	SHEET 1 OF 3	



- ### SYSTEM NOTES:
- (A) Emergency Gravity Flow Overheat Loop-Needs to be 10% of Wood Boiler Output. The Automag Zone Valve must be Mounted Horizontally.
 - (B) Weighted Check Valves Used as Heat Traps
 - (C) Termovar Mixing Valve (2 Options Available)
 - (D) Termovar Diverter Valve-Termovar Kit-Part #K6440AF
 - (E) Balancing Valve Required. (Start with Valve Closed halfway, i.e., at 45 degrees)
 - (F) Anti-Scald Valve needs to be installed below tank's water line or swing check installed on cold water line to prevent hot water from entering cold water
 - (G) Amtrol 60 or Equivalent Expansion Tank is Suitable for most Solo Plus Installations up to 86 gallons
 - (H) Honeywell L4008B Overheat Aquastat Set to 200°F. Connected to the Largest Heating Circuit.-Used with the Solo Plus W/Analog Controller, Froling FHG, and Solo Innova.



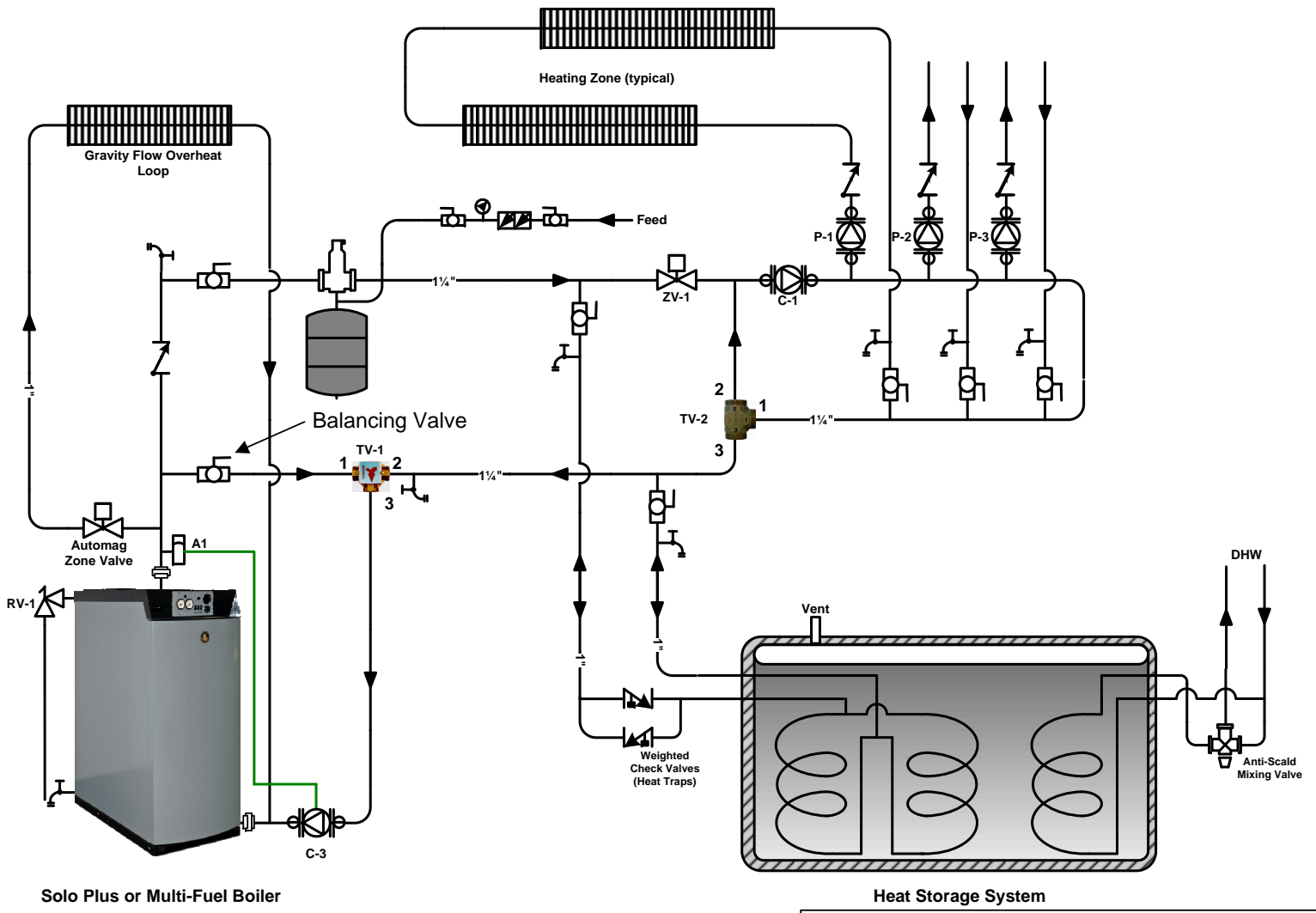
This is only a **concept** drawing. Final design, installation and code compliance details are the responsibility of the designer/installer of the system.

Tarm Biomass 5 Main Street Lyme, NH 03768	Tarm Biomass Piping Layout Concept Diagram		
	Single Boiler Installation With Circulators and Heat Storage System		
Drawn by: TSP	Date 07-16-2010	DWG NO E	REV 5
SCALE N/A	SHEET 2 OF 3		

Notes:
 TV-1 Valve-Termovar 4440 Thermostatic Valve or Equivalent.
 TV-2 Valve-Termovar 6440 Diverting Valve or Equivalent.
 A1 Aquastat- Honeywell L4006B or Equivalent (Solo Plus Only).
 C-3 and C-1 Circulator Sizing (multi-speed circulator recommended):
 2-120' coils-Taco 007 or Equivalent.
 2-180' coils-Taco 010 or Equivalent.
 3-180' coils-Taco 010 or Equivalent.

Symbol Key

Ball Valve	
Check Valve	
Weighted Check Valve	
Pressure Relief Valve	
Motorized Zone Valve	
Pressure Reducing Valve	
Differential Pressure Bypass	
Air Separator	
Circulator (w/isolation flanges)	
Boiler Drain	
Union	
Backflow Preventer	
Termovar Valve	



Note: This is only a concept drawing. Final design, installation and code compliance details are the responsibility of the designer/installer of the system.

